

How ASCI programs collect and transmit Lacey Act requirements

The **PGA Application** works similar to the Other Government Agency applications (This application eventually will replace the Other Government Agencies in the future).

When the tariff used requires a Lacey Act filing, the Quick Entry program will open the Other Government Agency screen. The PGA for Lacey Act indicator will be selected.

Other Government Agencies

Commands Edit Modes Other Help

FWS FDA FCC DOT PGA

Tariff #
4401210000

OK Abandon

You can enter more than one PGA line for each tariff line, depending on the merchandise being imported. Notice on the top right section of the screen, the current PGA Line # is displayed.

PGA Information Data Entry

Commands Edit Modes Other Scroll Commands Help

Commercial Description COMMERCIAL DESCRIPTION Tariff # 4401210000 PGA Ln#: 001

Agency Code AP Value 1500

Intended Use Code A2 Analysis Containers

Constituent Element Information (PG04 Records)

Seq #	Constituent Name	Quantity	U/M	Percent
001	WOOD	10.00	53LD	000

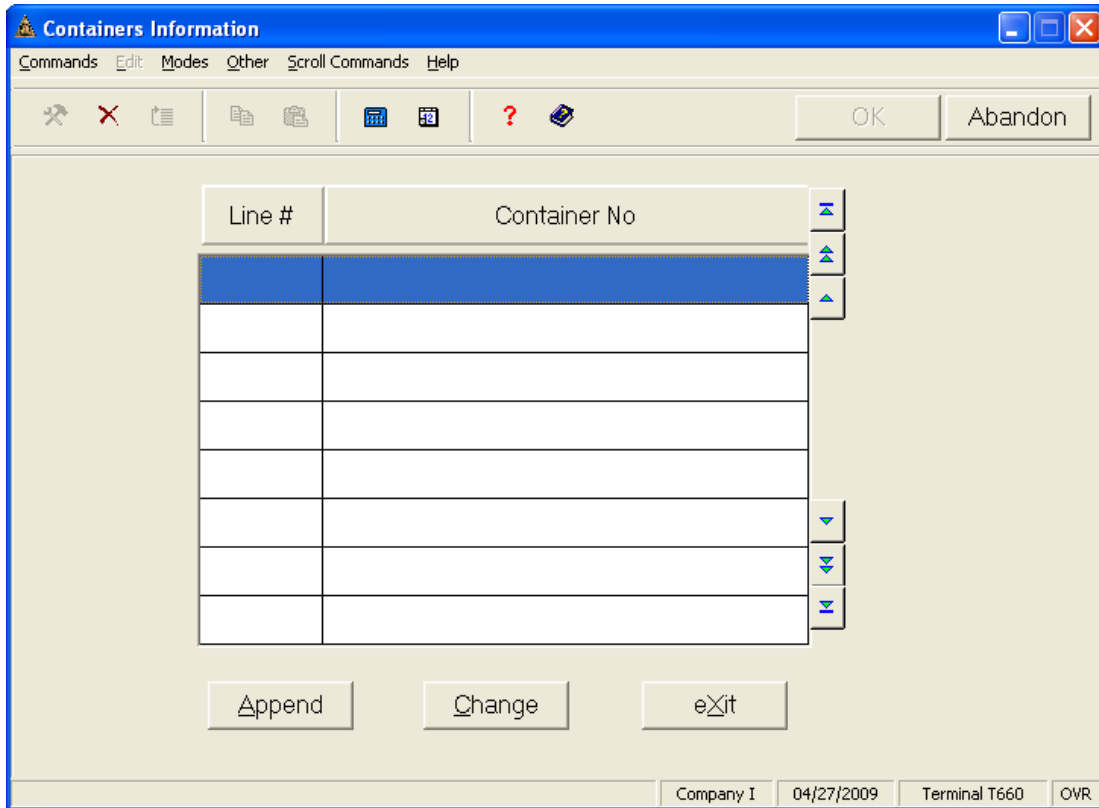
Add PGA Line Prev PGA Line Next PGA Line GoTo PGA Line Add Element Edit Element eXit

Company I 04/27/2009 Terminal T660 OVR

The top part of the window is the header information for the PGA Lines. The Agency Codes and Intended Use Codes are part of the CATAIR supplied by CBP, and they were added to the Import File Maintenance menu. The Bottom part of the screen is the Constituent Element Information Grid, and will be enabled once you complete the header information

If you want to enter Container Numbers related with the PGA Line, simply select the container indicator, and a new window will open to allow the Container Data Entry Information (displayed on the following page).

The bottom Part of the PGA window will be used to enter the Detail information for the Constituent Element Information



The <F3> Function will allow you to delete the current container Line or all the containers in the grid.

Once you have completed entering the header and container information, you will enter the Constituent Elements at the bottom half of the screen.

Buttons will work as follows:

Add PGA Line: It will take you from the Constituent Element Information to section to the Commercial Description section, adding a PGA Line.

Prev / Next PGA Line: These 2 buttons will navigate through the different PGA lines.

Go To PGA Line: It will allow the user to go directly to a specific PGA Line. This button represents a big enhancement from the regular Other Government Agencies Screen. In PGA you won't need to navigate through all the PGA Lines to get to the specific one you need to edit or correct. By clicking this button you can go directly to the PGA Line you need.

Add Element: Appends a new constituent element to the current screen, and opens the Constituent Data Entry Screen.

Edit Element: Edits an existing (selected) element

F3 or Delete Function: If you press <F3>, the program will prompt to delete the current PGA Line or all of them. The PGA line consists of the header information and all the Constituents related with the PGA line

Constituent Data Entry Screen

When users click on Add Element or Edit Element in the PGA Information Data Entry screen, the program will open the following window for them to enter the **Constituent** Element information

Seq #	Genus Name	Species Name	Country	
				<input type="checkbox"/>
				<input type="checkbox"/>
				<input type="checkbox"/>
				<input type="checkbox"/>
				<input type="checkbox"/>
				<input type="checkbox"/>
				<input type="checkbox"/>
				<input type="checkbox"/>

The above window also consists of two parts, the Constituent header information, and the Genus/Species Information Grid. Each element can have several genus/species lines related to it.

<F3> Function: If the Delete key is used from the top of the window, it will delete the Constituent line and the Genus/Species related with the line

There is a field in this part of the window called Recycled Indicator. If the product is flagged as recycled, you do not need to send Genus/Species and country if you do not have the information, or you can send only the Genus, species, or country.

PGA Detail Lines for Species (Append Mode)

Commands Edit Modes Other Scroll Commands Help

Constituent Name: Constituent Description PGA Ln#: 001

Quantity: 100.00 Recycled:

Unit of Measure: 53LD Percent: 100.000 Constituent Ln#: 001

Seq #	Genus Name	Species Name	Country
01	GENUS	SPECIES	US

Append Edit Same Species Same Country eXit

Company I 04/27/2009 Terminal T660 OVR

Buttons

Append: To add a new Genus/Species Line

Edit: To edit an existent Genus/Species Line

Same Species: The Genus Species combination will be disabled, and the program will allow the user to enter different countries lines from same Genus/ Species line

Same Country: The Country Code field will be disabled, and the program will allow the user to enter different Genus/Species combination lines for same country:

<F3> Function: It will delete the current or all the Genus/Species lines in the Grid

Note: There is no a special program to prepare and send PGA Information to ABI; it will be included in the Immediate Delivery / Consumption entry records the same way we prepare the OGA information for FDA, FCC, and DOT